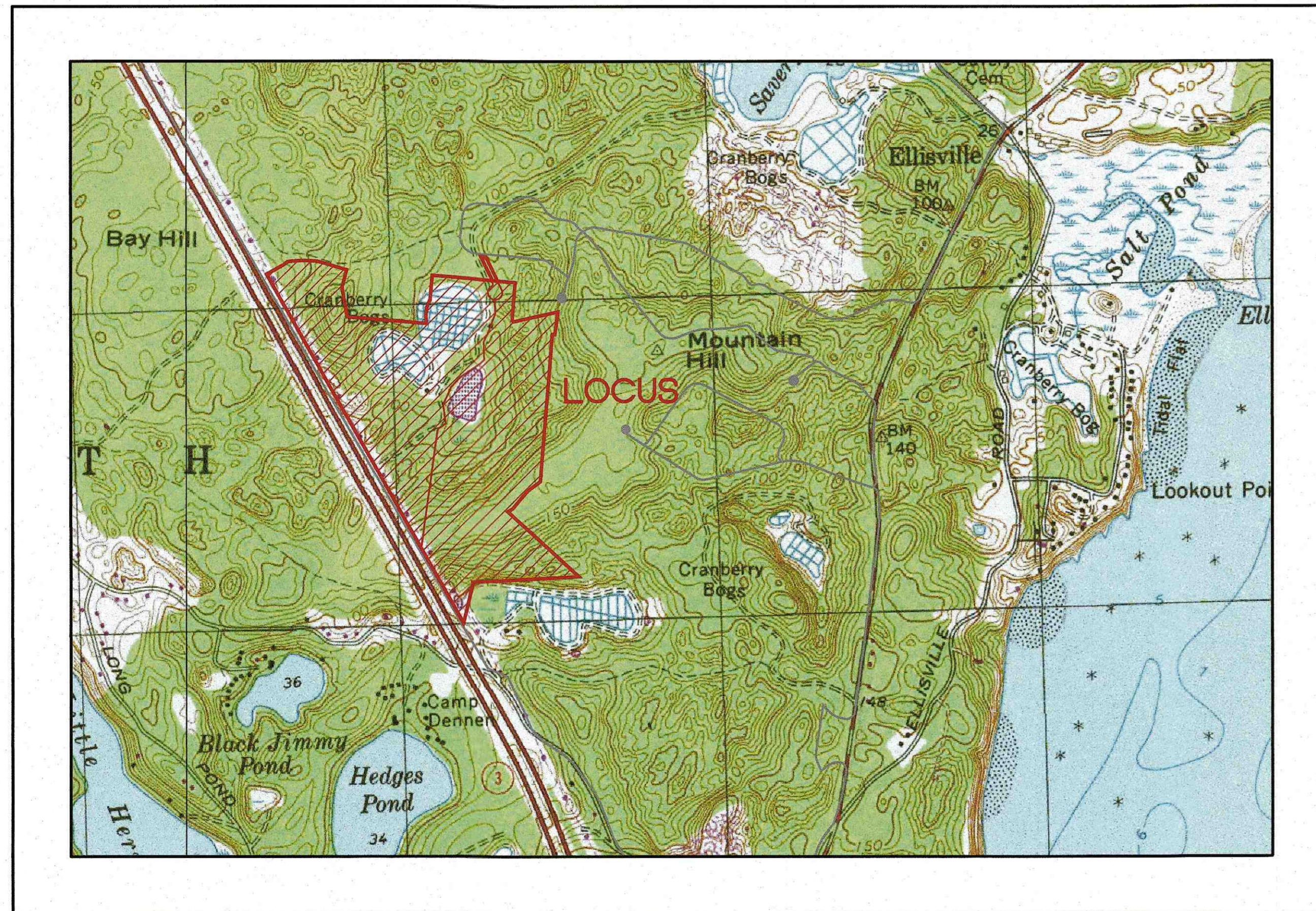


LANDERS FARM, LLC

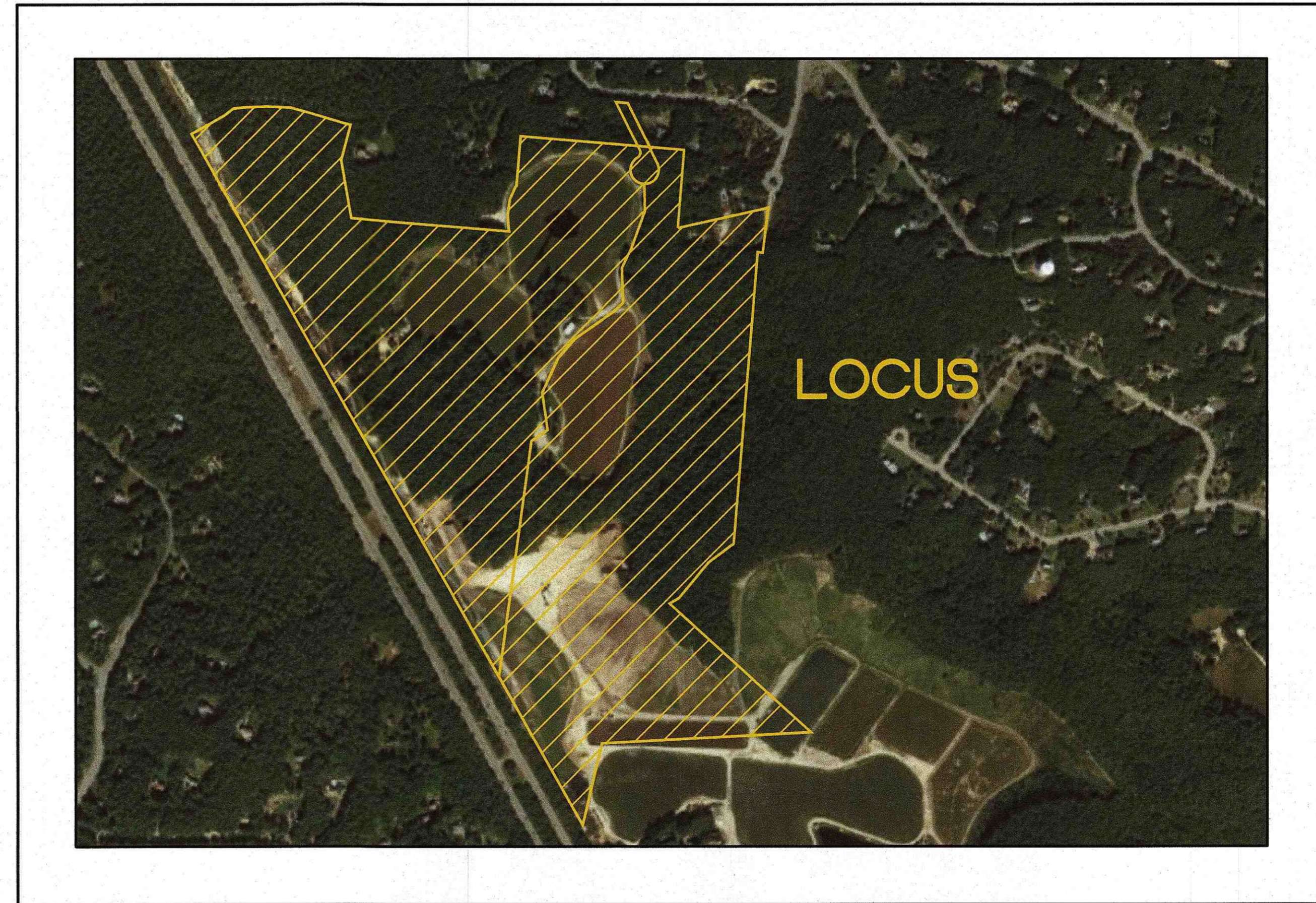
PLAN TO ACCOMPANY EARTH REMOVAL PERMIT PLYMOUTH, MASSACHUSETTS

APPLICANT: LANDERS FARM, LLC.
351 WINTER STREET
HANOVER, MA 02339

OWNERS: LANDERS FARM, LLC.
351 WINTER STREET
HANOVER, MA 02339



— U.S.G.S LOCUS PLAN —
SCALE: 1" = 1000'



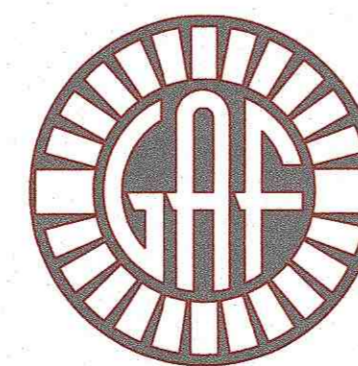
— GOOGLE EARTH PHOTO —
SCALE: 1" = 500'

SITE DATA

ZONING DISTRICT:
RR : RURAL RESIDENTIAL
ACCESS ROAD : HEDGES POND ROAD
ASSESSOR'S MAP 61 / LOTS 33-2 & 33-3

FLOOD DATA

REFER TO THE F.E.M.A. FLOOD INSURANCE
RATE MAPS, SEE PANELS 25023C0505-K &
25023C0508-L, BOTH DATED JULY 6, 2021.
SITE IS WITHIN ZONE X AND ZONE A.



G. A. F. ENGINEERING, INC.
PROFESSIONAL ENGINEERS & LAND SURVEYORS
266 MAIN STREET, WAREHAM, MA 02571
TEL: (508) 295-6600 FAX: (508) 295-6634
E-MAIL: info@gafenginc.com

OCTOBER 9, 2024

PLAN INDEX

SHEET NO.	DESCRIPTION
ER-1	COVER SHEET
ER-2	EXISTING CONDITIONS PLAN
ER-3	PROPOSED OVERVIEW PLAN
ER-4	SITE PLAN - TAILWATER POND
ER-5	SITE PLAN - BOG SECTION B
ER-6	SITE PLAN - BOG SECTION A
ER-7	SITE PLAN - DETAILS
ER-8	SITE PLAN - TRUCK ROUTE

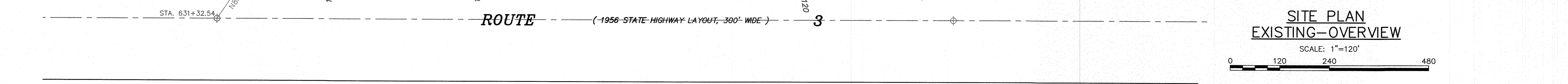
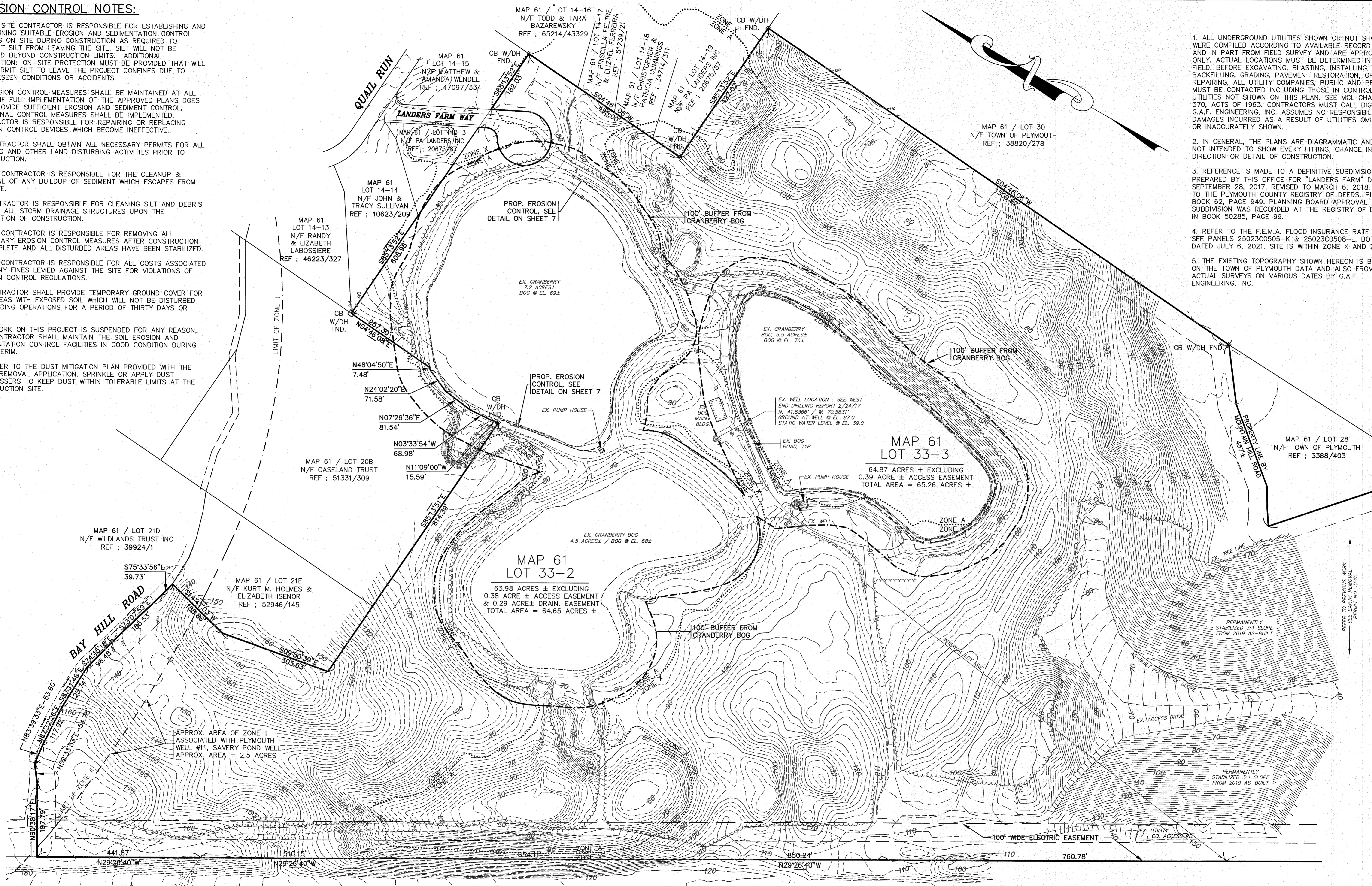
DATE: OCT. 9, 2024	DRAWN BY: JH	CHECKED BY: WFM	JOB NO.: 19-9277	SCALE: AS NOTED	REV.	DATE	BY	APP'D	DESCRIPTION
APPROVED BY:									
G.A.F. ENGINEERING, INC. PROFESSIONAL ENGINEERS & LAND SURVEYORS 266 MAIN STREET - WAREHAM, MA 02571 TEL: (508) 295-6600 FAX: (508) 295-6634 E-MAIL: info@gafenginc.com					LANDERS FARM, LLC HANOVER, MA 351 WINTER STREET				
EARTH REMOVAL PLAN COVER SHEET HEDGES POND ROAD PLYMOUTH, MA					PREPARED FOR: LANDERS FARM, LLC HANOVER, MA				
JOB NO.: 19-9277					DWG. ER-1				

PERMIT SET
(NOT FOR CONSTRUCTION)

EROSION CONTROL NOTES:

1. THE SITE CONTRACTOR IS RESPONSIBLE FOR ESTABLISHING AND MAINTAINING SUITABLE EROSION AND SEDIMENTATION CONTROL DEVICES ON SITE DURING CONSTRUCTION AS REQUIRED TO PREVENT SILT FROM LEAVING THE SITE. SILT WILL NOT BE ALLOWED BEYOND CONSTRUCTION LIMITS. ADDITIONAL PROTECTION: ON-SITE PROTECTION MUST BE PROVIDED THAT WILL NOT PERMIT SILT TO LEAVE THE PROJECT CONFINES DUE TO UNFORESEEN CONDITIONS OR ACCIDENTS.
2. EROSION CONTROL MEASURES SHALL BE MAINTAINED AT ALL TIMES. IF FULL IMPLEMENTATION OF THE APPROVED PLANS DOES NOT PROVIDE SUFFICIENT EROSION AND SEDIMENT CONTROL, ADDITIONAL CONTROL MEASURES SHALL BE IMPLEMENTED. CONTRACTOR IS RESPONSIBLE FOR REPAIRING OR REPLACING EROSION CONTROL DEVICES WHICH BECOME INEFFECTIVE.
3. CONTRACTOR SHALL OBTAIN ALL NECESSARY PERMITS FOR ALL GRADING AND OTHER LAND DISTURBING ACTIVITIES PRIOR TO CONSTRUCTION.
4. THE CONTRACTOR IS RESPONSIBLE FOR THE CLEANUP & REMOVAL OF ANY BUILDUP OF SEDIMENT WHICH ESCAPES FROM THE SITE.
5. CONTRACTOR IS RESPONSIBLE FOR CLEANING SILT AND DEBRIS OUT OF ALL STORM DRAINAGE STRUCTURES UPON THE COMPLETION OF CONSTRUCTION.
6. THE CONTRACTOR IS RESPONSIBLE FOR REMOVING ALL TEMPORARY EROSION CONTROL MEASURES AFTER CONSTRUCTION IS COMPLETE AND ALL DISTURBED AREAS HAVE BEEN STABILIZED.
7. THE CONTRACTOR IS RESPONSIBLE FOR ALL COSTS ASSOCIATED WITH ANY FINES LEVIED AGAINST THE SITE FOR VIOLATIONS OF EROSION CONTROL REGULATIONS.
8. CONTRACTOR SHALL PROVIDE TEMPORARY GROUND COVER FOR ALL AREAS WITH EXPOSED SOIL WHICH WILL NOT BE DISTURBED BY GRADING OPERATIONS FOR A PERIOD OF THIRTY DAYS OR MORE.
9. IF WORK ON THIS PROJECT IS SUSPENDED FOR ANY REASON, THE CONTRACTOR SHALL MAINTAIN THE SOIL EROSION AND SEDIMENTATION CONTROL FACILITIES IN GOOD CONDITION DURING THE INTERIM.
10. REFER TO THE DUST MITIGATION PLAN PROVIDED WITH THE EARTH REMOVAL APPLICATION. SPRINKLE OR APPLY DUST SUPPRESSERS TO KEEP DUST WITHIN TOLERABLE LIMITS AT THE CONSTRUCTION SITE.

1. ALL UNDERGROUND UTILITIES SHOWN OR NOT SHOWN WERE COMPILED ACCORDING TO AVAILABLE RECORD PLANS AND IN PART FROM FIELD SURVEY AND ARE APPROXIMATE ONLY. ACTUAL LOCATIONS MUST BE DETERMINED IN THE FIELD. BEFORE EXCAVATING, BLASTING, INSTALLING, BACKFILLING, GRADING, PAVEMENT RESTORATION, OR REPAIRING, ALL UTILITY COMPANIES, PUBLIC AND PRIVATE, MUST BE CONTACTED INCLUDING THOSE IN CONTROL OF UTILITIES NOT SHOWN ON THIS PLAN. SEE MGL CHAPTER 370, ACTS OF 1963. CONTRACTORS MUST CALL DIG-SAFE. G.A.F. ENGINEERING, INC. ASSUMES NO RESPONSIBILITY FOR DAMAGES INCURRED AS A RESULT OF UTILITIES OMITTED OR INACCURATELY SHOWN.
2. IN GENERAL, THE PLANS ARE DIAGRAMMATIC AND ARE NOT INTENDED TO SHOW EVERY FITTING, CHANGE IN DIRECTION OR DETAIL OF CONSTRUCTION.
3. REFERENCE IS MADE TO A DEFINITIVE SUBDIVISION PLAN PREPARED BY THIS OFFICE FOR "LANDERS FARM" DATED SEPTEMBER 28, 2017, REVISED TO MARCH 6, 2018. REFER TO THE PLYMOUTH COUNTY REGISTRY OF DEEDS, PLAN BOOK 62, PAGE 949. PLANNING BOARD APPROVAL OF THE SUBDIVISION WAS RECORDED AT THE REGISTRY OF DEEDS IN BOOK 50285, PAGE 99.
4. REFER TO THE F.E.M.A. FLOOD INSURANCE RATE MAPS, SEE PANELS 25023C0505-K & 25023C0508-L BOTH DATED JULY 6, 2021. SITE IS WITHIN ZONE X AND ZONE A.
5. THE EXISTING TOPOGRAPHY SHOWN HEREON IS BASED ON THE TOWN OF PLYMOUTH DATA AND ALSO FROM ACTUAL SURVEYS ON VARIOUS DATES BY G.A.F. ENGINEERING, INC.



DATE: OCT. 9, 2024	APPROVED BY:		G.A.F. ENGINEERING, INC. PROFESSIONAL ENGINEERS & LAND SURVEYORS 266 MAIN STREET - WAREHAM, MA 02571 TEL: (508) 295-6600 FAX: (508) 295-6634 E-MAIL: info@gafenginc.com
DRAWN BY: JH	APPROVED BY: [Signature]		
CHECKED BY: WFM	DATE: 10/10/24	PREPARED FOR: LANDERS FARM, LLC HEDGES POND ROAD PLYMOUTH, MA	HANOVER, MA
JOB NO.: 19-9277	REV. DATE		
SCALE: 1" = 120'	BY: APPD	DWG. NO.: FR-2	

\\G:\DRAWINGS\2019 DRAWINGS\19-9277-4 (PA LANDERS)\2024\10\09\2024-10-09.dwg

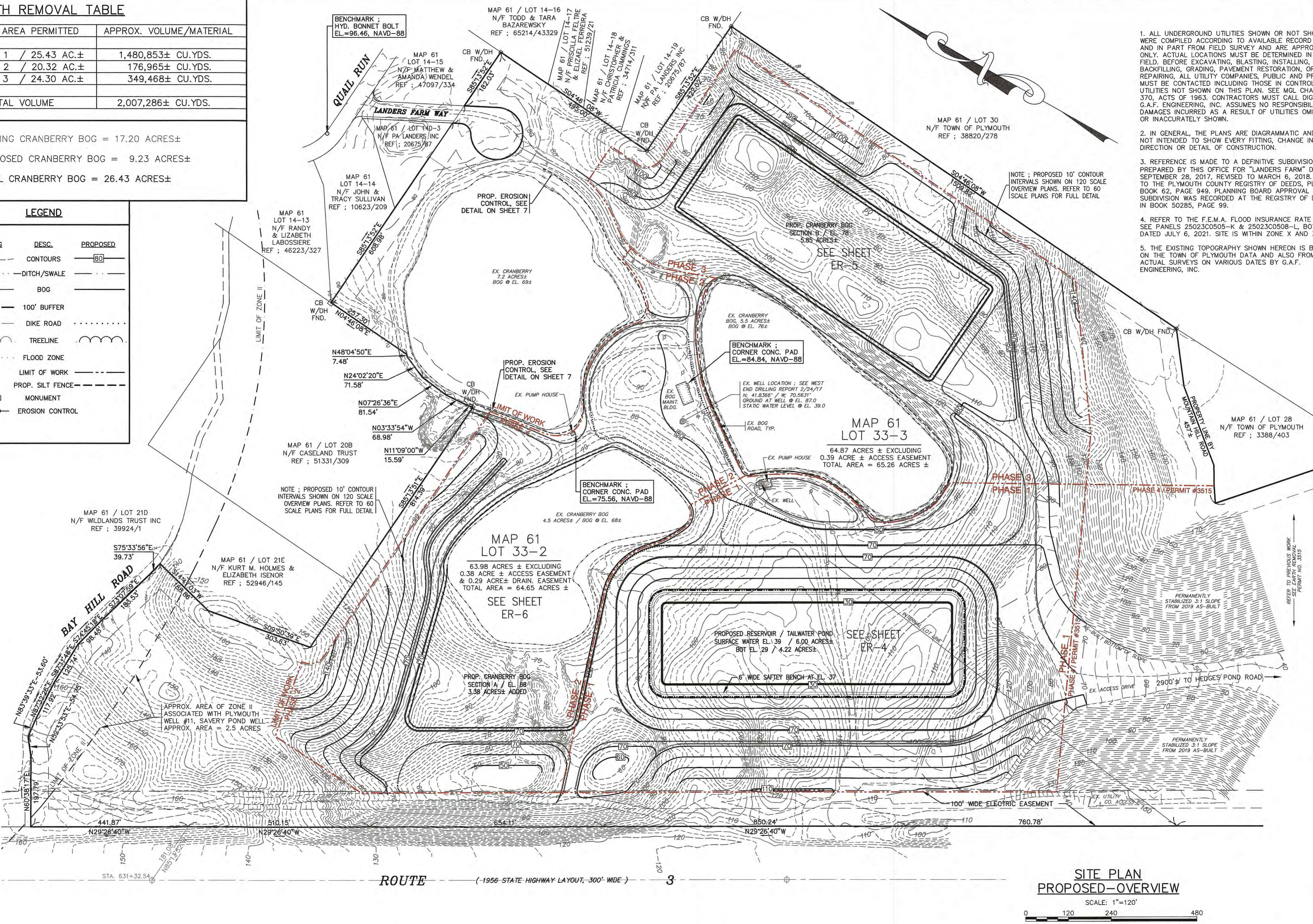
EARTH REMOVAL TABLE

WORK AREA PERMITTED	APPROX. VOLUME/MATERIAL
PHASE 1 / 25.43 AC.±	1,480,853± CU.YDS.
PHASE 2 / 20.32 AC.±	176,965± CU.YDS.
PHASE 3 / 24.30 AC.±	349,468± CU.YDS.
TOTAL VOLUME	2,007,286± CU.YDS.

EXISTING CRANBERRY BOG = 17.20 ACRES±
 PROPOSED CRANBERRY BOG = 9.23 ACRES±
 TOTAL CRANBERRY BOG = 26.43 ACRES±

LEGEND

EXISTING	DESC.	PROPOSED
	CONTOURS	
	DITCH/SWALE	
	BOG	
	100' BUFFER	
	DIKE ROAD	
	TREELINE	
	FLOOD ZONE	
	LIMIT OF WORK	
	PROP. SILT FENCE	
	MONUMENT	
	EROSION CONTROL	



- ALL UNDERGROUND UTILITIES SHOWN OR NOT SHOWN WERE COMPILED ACCORDING TO AVAILABLE RECORD PLANS AND IN PART FROM FIELD SURVEY AND ARE APPROXIMATE ONLY. ACTUAL LOCATIONS MUST BE DETERMINED IN THE FIELD, BEFORE EXCAVATING, BLASTING, INSTALLING, BACKFILLING, GRADING, PAVEMENT RESTORATION, OR REPAIRING. ALL UTILITY COMPANIES, PUBLIC AND PRIVATE, MUST BE CONTACTED INCLUDING THOSE IN CONTROL OF UTILITIES NOT SHOWN ON THIS PLAN. SEE MGL CHAPTER 370, ACTS OF 1963. CONTRACTORS MUST CALL DIG-SAFE. G.A.F. ENGINEERING, INC. ASSUMES NO RESPONSIBILITY FOR DAMAGES INCURRED AS A RESULT OF UTILITIES OMITTED OR INACCURATELY SHOWN.
- IN GENERAL, THE PLANS ARE DIAGRAMMATIC AND ARE NOT INTENDED TO SHOW EVERY FITTING, CHANGE IN DIRECTION OR DETAIL OF CONSTRUCTION.
- REFERENCE IS MADE TO A DEFINITIVE SUBDIVISION PLAN PREPARED BY THIS OFFICE FOR "LANDERS FARM" DATED SEPTEMBER 28, 2017, REVISED TO MARCH 6, 2018. REFER TO THE PLYMOUTH COUNTY REGISTRY OF DEEDS, PLAN BOOK 62, PAGE 949. PLANNING BOARD APPROVAL OF THE SUBDIVISION WAS RECORDED AT THE REGISTRY OF DEEDS IN BOOK 50285, PAGE 99.
- REFER TO THE F.E.M.A. FLOOD INSURANCE RATE MAPS, SEE PANELS 25023C0505-K & 25023C0508-L, BOTH DATED JULY 6, 2021. SITE IS WITHIN ZONE X AND ZONE A.
- THE EXISTING TOPOGRAPHY SHOWN HEREON IS BASED ON THE TOWN OF PLYMOUTH DATA AND ALSO FROM ACTUAL SURVEYS ON VARIOUS DATES BY G.A.F. ENGINEERING, INC.

NOTE: PROPOSED 10' CONTOUR INTERVALS SHOWN ON 120 SCALE OVERVIEW PLANS. REFER TO 60 SCALE PLANS FOR FULL DETAIL

**SITE PLAN
 PROPOSED-OVERVIEW**
 SCALE: 1"=120'
 0 120 240 480

DATE: OCT. 9, 2024
 DRAWN BY: JH
 CHECKED BY: WFM
 JOB NO.: 19-9277
 SCALE: 1" = 120'

APPROVED BY:

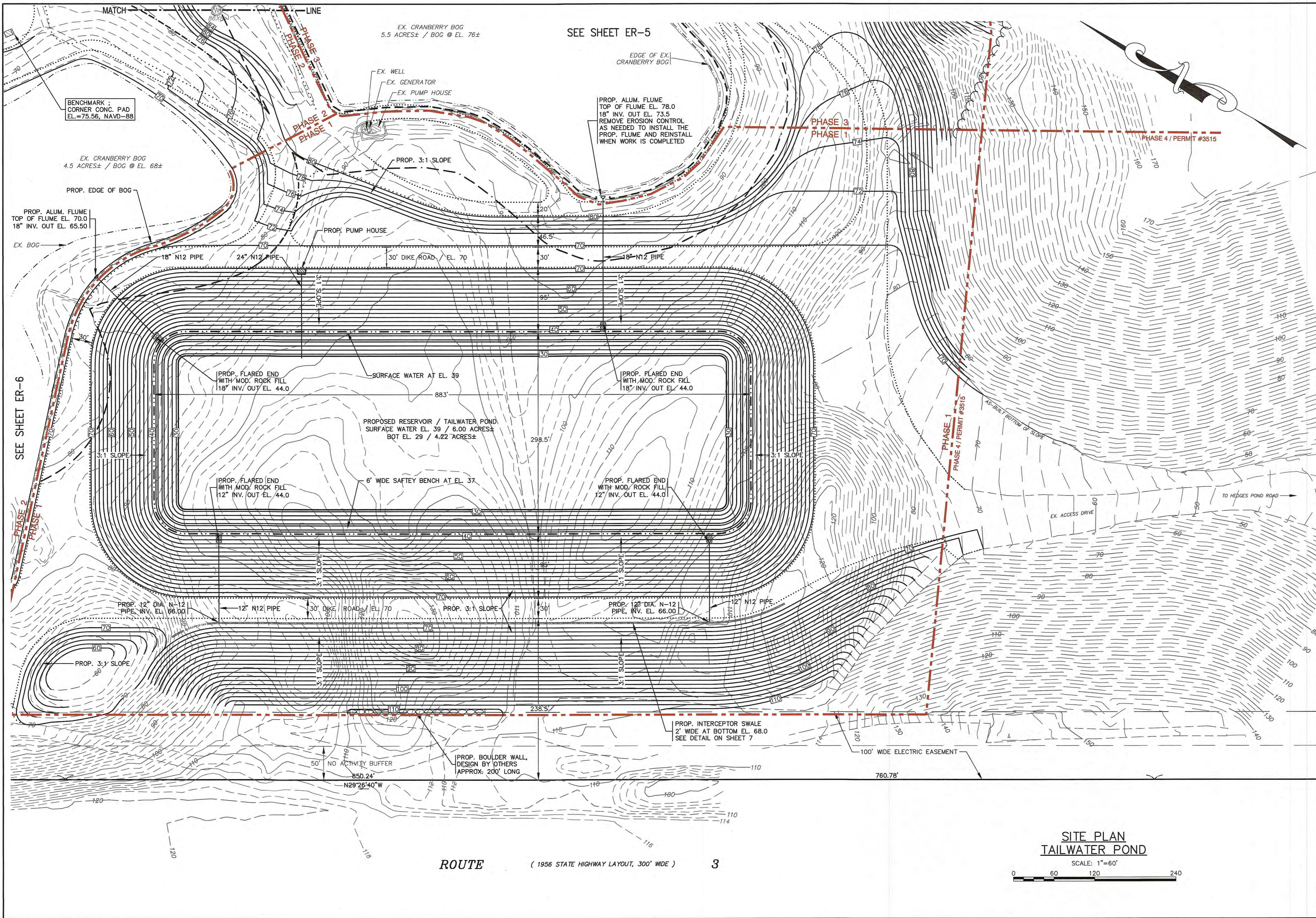
G.A.F. ENGINEERING, INC.
 PROFESSIONAL ENGINEERS & LAND SURVEYORS
 286 MAIN STREET, WAREHAM, MA 02571
 TEL: (508) 295-6600 FAX: (508) 295-6634
 E-MAIL: info@gafeng.com www.gafeng.com

PREPARED FOR:
LANDERS FARM, LLC
 HANOVER, MA
 P.O. BOX 217

REVISIONS:

NO.	DATE	DESCRIPTION

JOB NO.: 19-9277
 DWG. ER-3

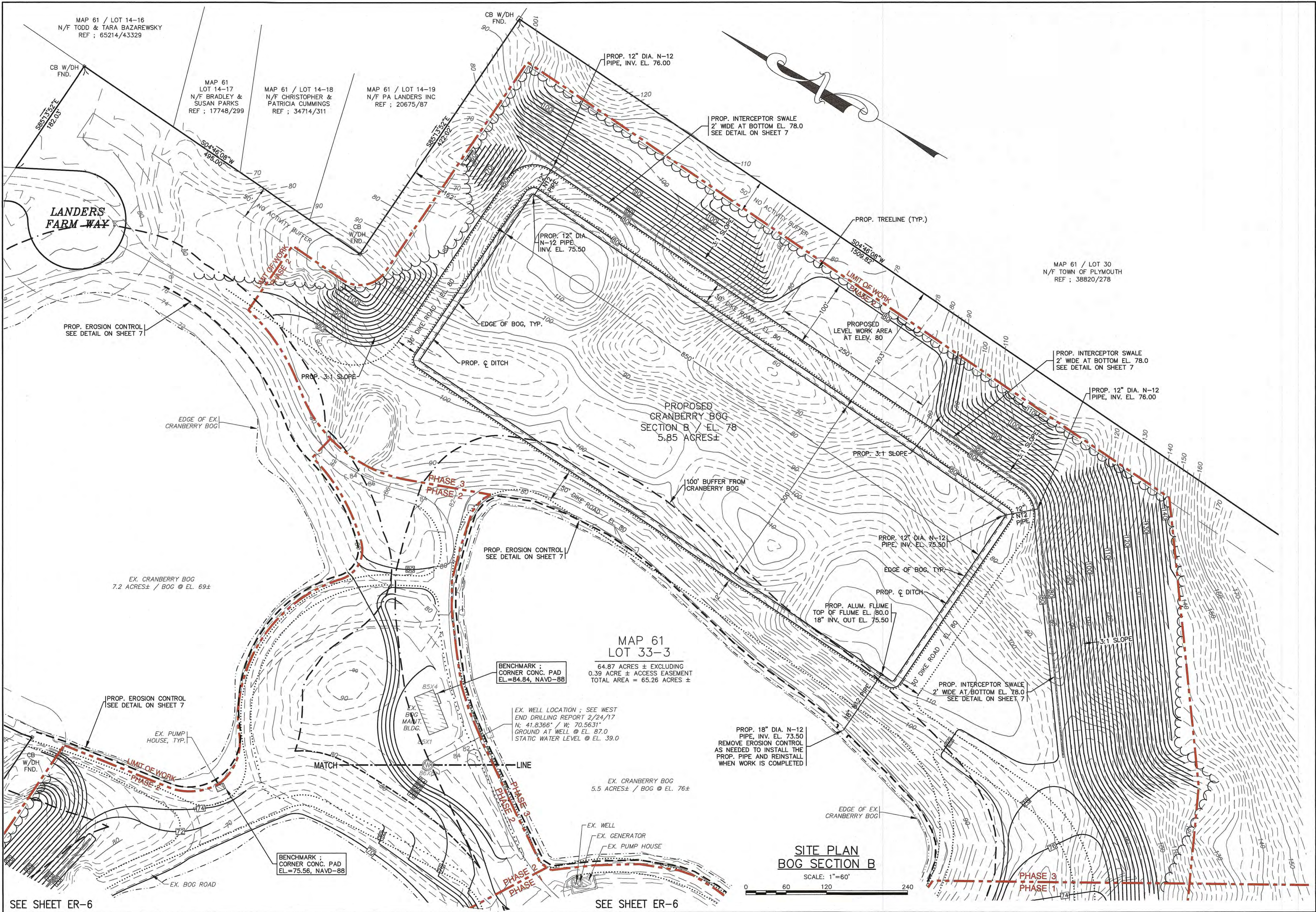


**SITE PLAN
TAILWATER POND**
SCALE: 1"=60'

ROUTE (1956 STATE HIGHWAY LAYOUT, 300' WIDE) **3**

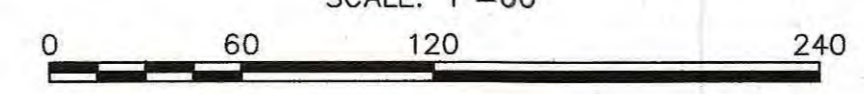
DATE: OCT. 9, 2024	DRAWN BY: JH	CHECKED BY: WFM	JOB NO.: 19-9277	SCALE: 1" = 60'
APPROVED BY:				
<p>G.A.F. ENGINEERING, INC. PROFESSIONAL ENGINEERS & LAND SURVEYORS 286 MAIN STREET - WARREN, MA 02571 TEL: (508) 295-6600 FAX: (508) 295-6634 E-MAIL: info@gafengrinc.com</p>				
<p>EARTH REMOVAL PLAN TAILWATER POND HEDGES POND ROAD PLYMOUTH, MA</p>				
<p>PREPARED FOR: LANDERS FARM, LLC HANOVER, MA</p>				
<p>JOB NO.: 19-9277</p>				
<p>DWG. ER-4</p>				
REV.	DATE	BY	APP'D	DESCRIPTION

H:\GAF DRAWINGS\2019 DRAWINGS\19-9277-01 (PA LANDERS)\9277.dwg(9277-002.dwg)



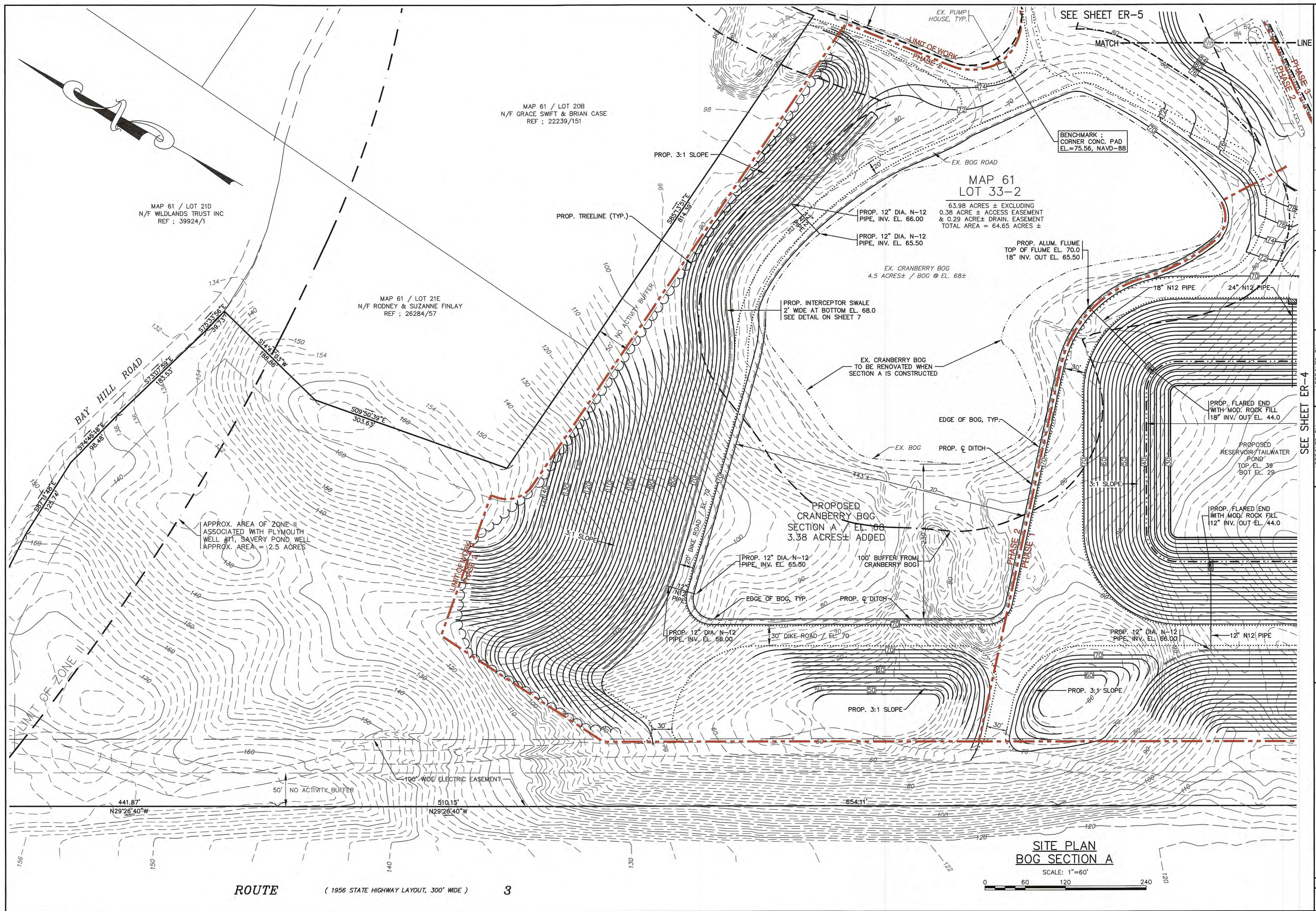
MAP 61
LOT 33-3
64.87 ACRES ± EXCLUDING
0.39 ACRE ± ACCESS EASEMENT
TOTAL AREA = 65.26 ACRES ±

SITE PLAN
BOG SECTION B
SCALE: 1"=60'



DATE: OCT. 9, 2024		APPROVED BY:	DATE:	BY:	APP'D:	DESCRIPTION:
DRAWN BY: JH						
CHECKED BY: WFM						
JOB NO.: 19-9277						
SCALE: 1" = 60'						
G.A.F. ENGINEERING, INC. PROFESSIONAL ENGINEERS & LAND SURVEYORS 286 MAIN STREET - WAREHAM, MA 02571 TEL: (508) 295-6600 FAX: (508) 295-6634 E-MAIL: info@gafenginc.com		LANDERS FARM, LLC HEDGES POND ROAD PLYMOUTH, MA 351 WINTER STREET HANOVER, MA		JOB NO.: 19-9277 DWG. ER-5		

© 2024 G.A.F. ENGINEERING, INC. NO PART OF THIS DOCUMENT MAY BE REPRODUCED, STORED, OR TRANSMITTED IN ANY FORM OR BY ANY MEANS, WITHOUT THE EXPRESS WRITTEN CONSENT OF G.A.F. ENGINEERING, INC. WITH THE EXCEPTION OF ANY REGULATORY AUTHORITY WHICH MAY REPRODUCE IT IN CONNECTION WITH THE PERFORMANCE OF ANY PROFESSIONAL SERVICE. ALL RIGHTS RESERVED.



MAP 61 / LOT 21D
N/F WILDLANDS TRUST INC
REF : 39924/1

MAP 61 / LOT 20B
N/F GRACE SWIFT & BRIAN CASE
REF : 22239/151

MAP 61 / LOT 21E
N/F RODNEY & SUZANNE FINLAY
REF : 26284/57

MAP 61
LOT 33-2

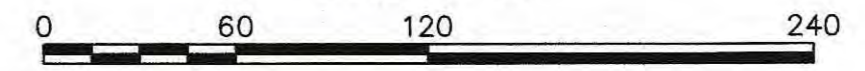
63.98 ACRES ± EXCLUDING
0.38 ACRE ± ACCESS EASEMENT
& 0.29 ACRE ± DRAIN. EASEMENT
TOTAL AREA = 64.65 ACRES ±

BENCHMARK :
CORNER CONC. PAD
EL.=75.56, NAVD-88

APPROX. AREA OF ZONE-II
ASSOCIATED WITH PLYMOUTH
WELL #1, SAVERY POND WELL
APPROX. AREA = 2.5 ACRES

SITE PLAN
BOG SECTION A

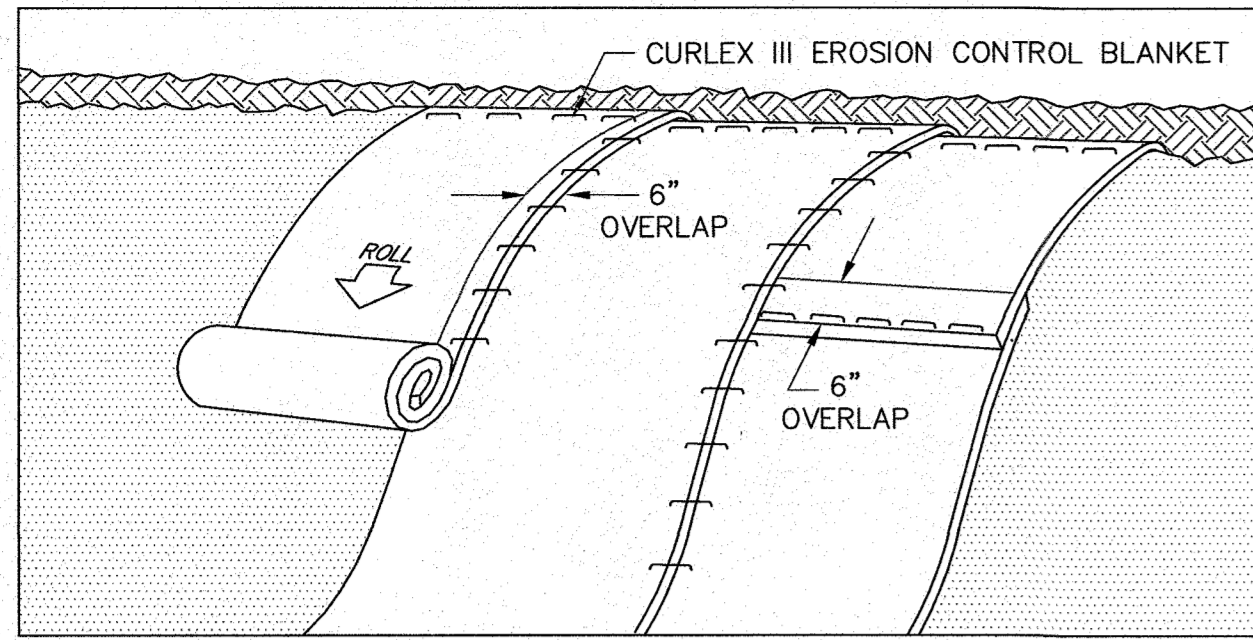
SCALE: 1"=60'



ROUTE (1956 STATE HIGHWAY LAYOUT, 300' WIDE) 3

DATE: OCT. 9, 2024	DRAWN BY: JH	CHECKED BY: WFM	JOB NO.: 19-9277	SCALE: 1" = 60'
APPROVED BY: <i>[Signature]</i> 10/11/24				
G.A.F. ENGINEERING, INC. PROFESSIONAL ENGINEERS & LAND SURVEYORS 286 MAIN STREET - WAREHAM, MA 02571 TEL: (508) 295-6600 FAX: (508) 295-6634 E-MAIL: info@gafengr.com				
PREPARED FOR: LANDERS FARM, LLC HANOVER, MA				
EARTH REMOVAL PLAN BOG SECTION A HEDGES POND ROAD PLYMOUTH, MA				
JOB NO.: 19-9277 DWG. ER-6				
REV.	DATE	BY	APP'D	DESCRIPTION

H:\GAF DRAWINGS\2019 DRAWINGS\19-9277-N (PA LANDERS)\0277\DWG\ER-02A.dwg

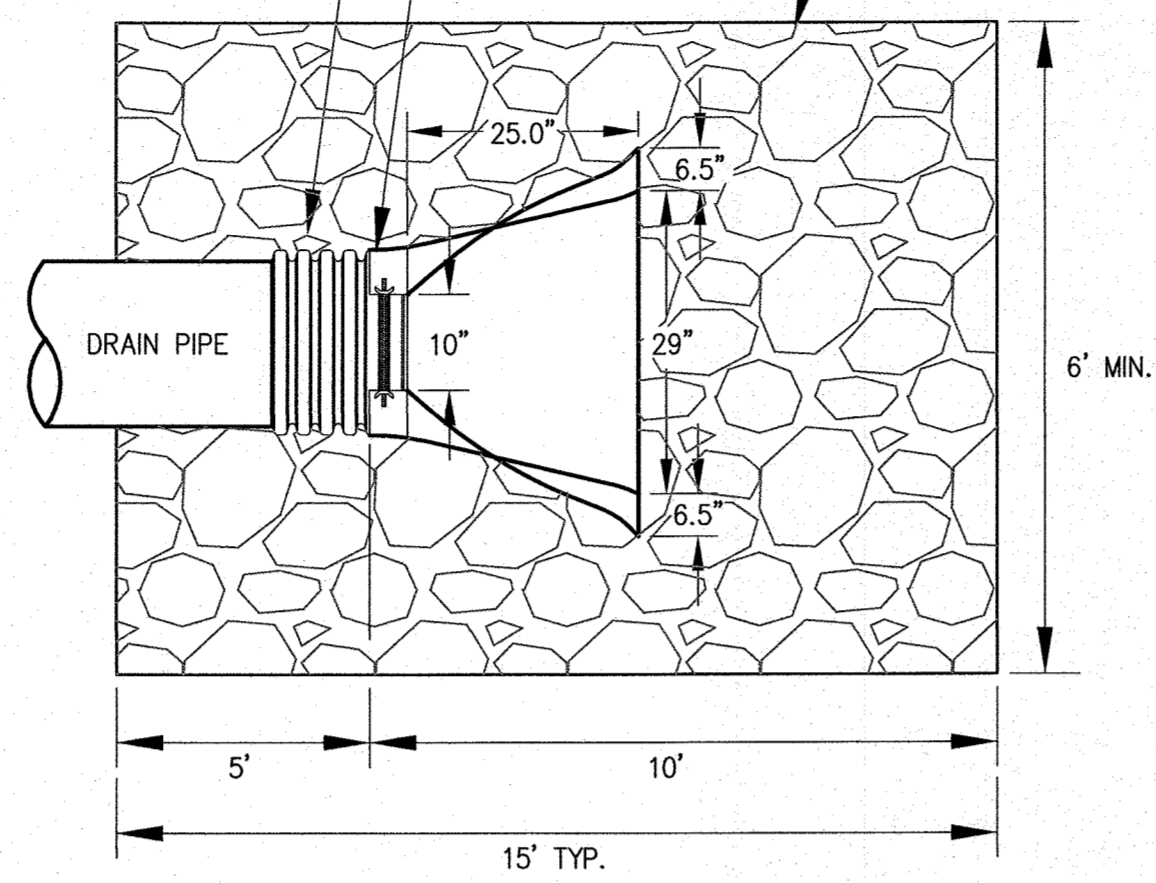


EROSION CONTROL BLANKET INSTALLATION NOTES.

1. PREPARE SOIL BEFORE INSTALLING EROSION CONTROL BLANKET, INCLUDING ANY APPLICATION OF LIME, FERTILIZER, AND SEED.
2. BEGIN AT THE TOP OF THE SLOPE BY ANCHORING BLANKET IN A 6" DEEP X 6" WIDE TRENCH WITH APPROXIMATELY 12" OF MATERIAL EXTENDED BEYOND THE TRENCH. ANCHOR MATERIAL WITH A ROW OF STAPLES APPROXIMATELY 12" APART, THEN BACKFILL AND COMPACT THE TRENCH.
3. APPLY SEED TO THE SOIL AND FOLD REMAINING 12" PORTION OF RECP'S BACK OVER SEED AND COMPACTED SOIL. SECURE BLANKET OVER THE SOIL WITH A ROW OF STAPLES APPROXIMATELY 12" APART ACROSS THE WIDTH OF THE MATERIAL.
4. ROLL BLANKET DOWN THE SLOPE, WITH THE APPROPRIATE SIDE AGAINST THE SOIL SURFACE. BLANKET MUST BE SECURELY FASTENED TO SOIL SURFACE BY PLACING STAPLES AS SHOWN.
5. THE EDGES OF PARALLEL SECTIONS OF BLANKET MUST BE STAPLED WITH APPROXIMATELY 6" OVERLAP.
6. CONSECUTIVE ROLLS LAID DOWN THE SLOPE MUST BE PLACED END OVER END WITH AN APPROXIMATE 6" OVERLAP. STAPLE THROUGH OVERLAPPED AREA, APPROXIMATELY 12" APART ACROSS ENTIRE WIDTH.
7. REFER TO SPECIFIC MANUFACTURERS INSTALLATION INSTRUCTIONS FOR ADDITIONAL DETAIL.

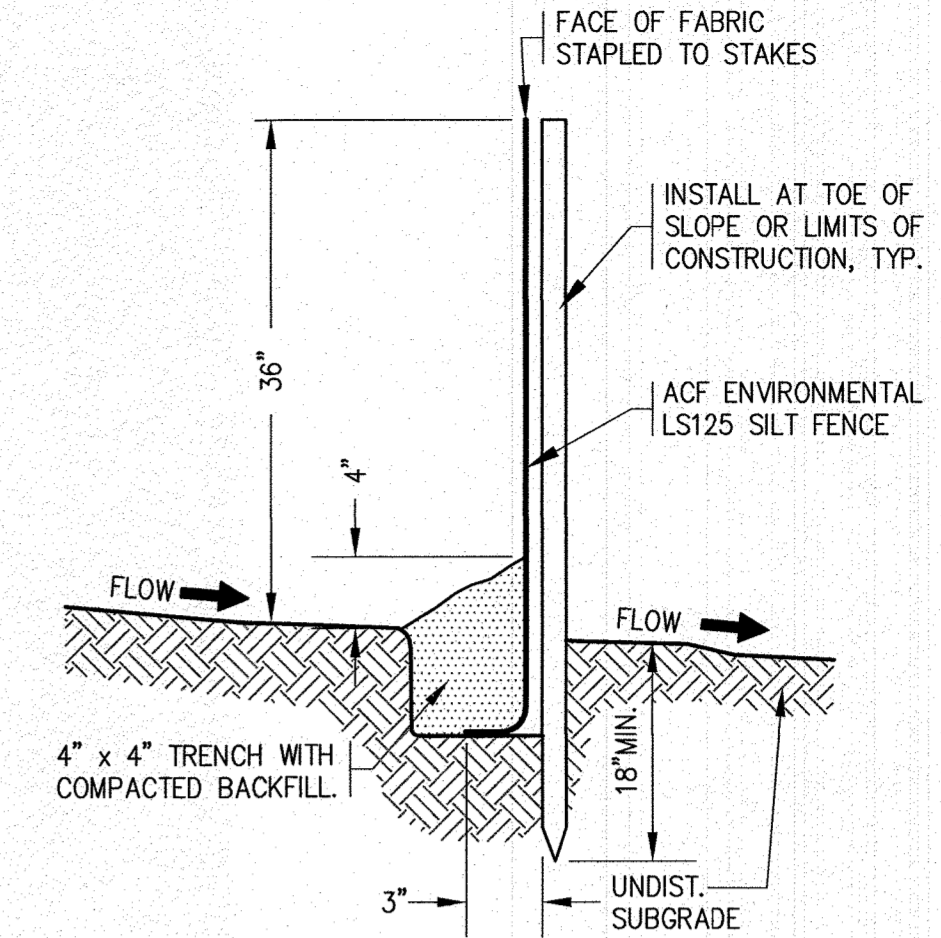
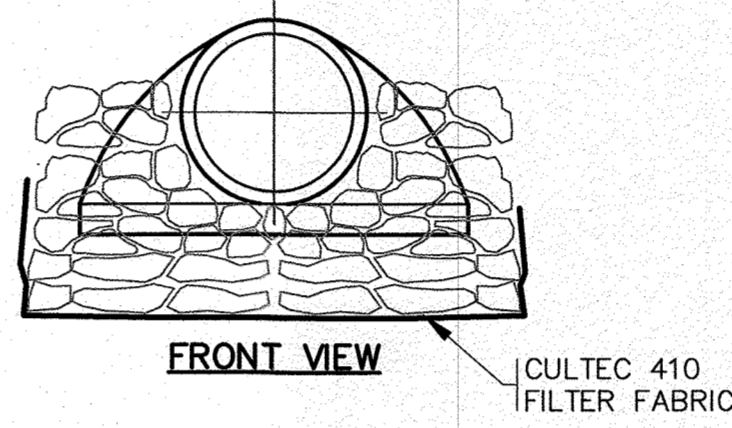
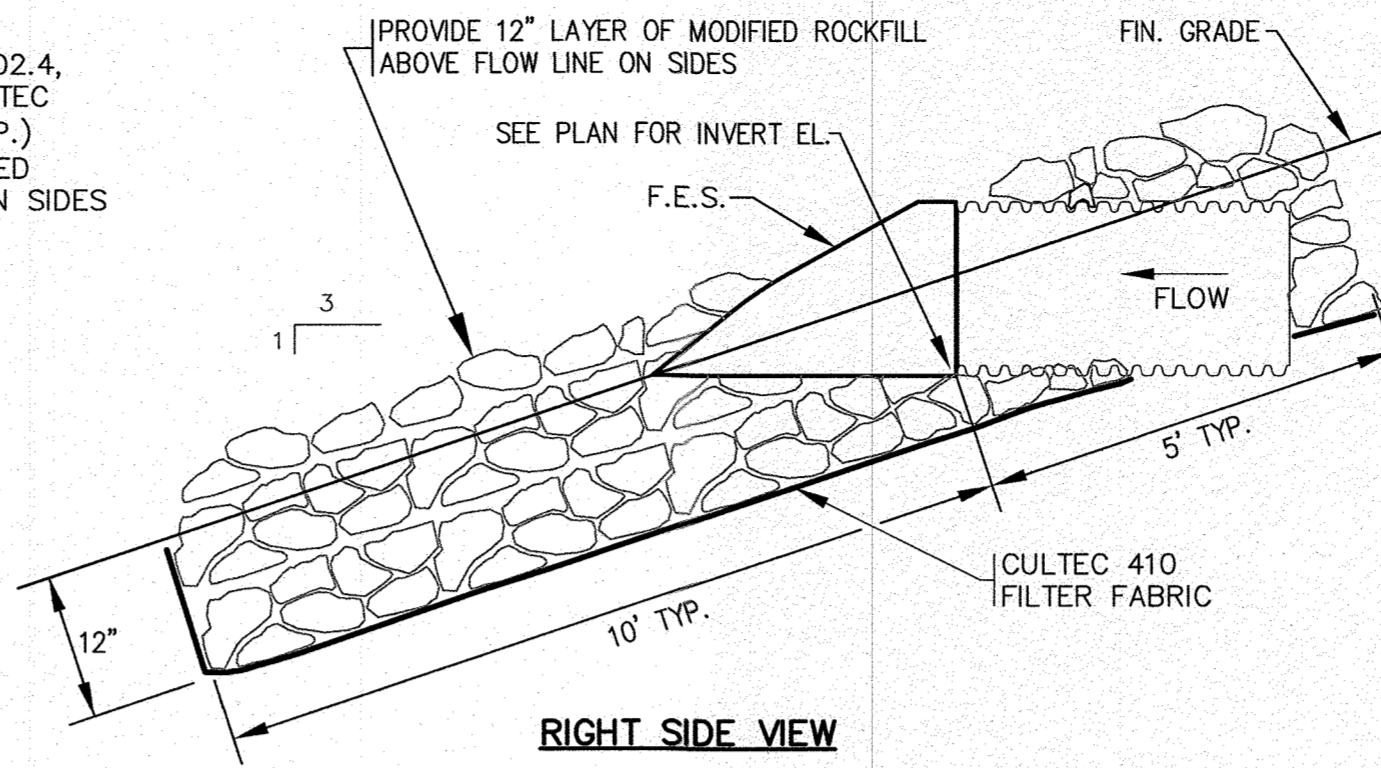
EROSION CONTROL BLANKET
N.T.S.

COVER ANY EXPOSED PIPE WITH MODIFIED ROCKFILL, MassDOT SPEC. M2.02.4, OVER GEOTEXTILE FABRIC, CULTEC 410 OR APPROVED EQUAL (TYP.) PROVIDE 12" LAYER OF MODIFIED ROCKFILL ABOVE FLOW LINE ON SIDES



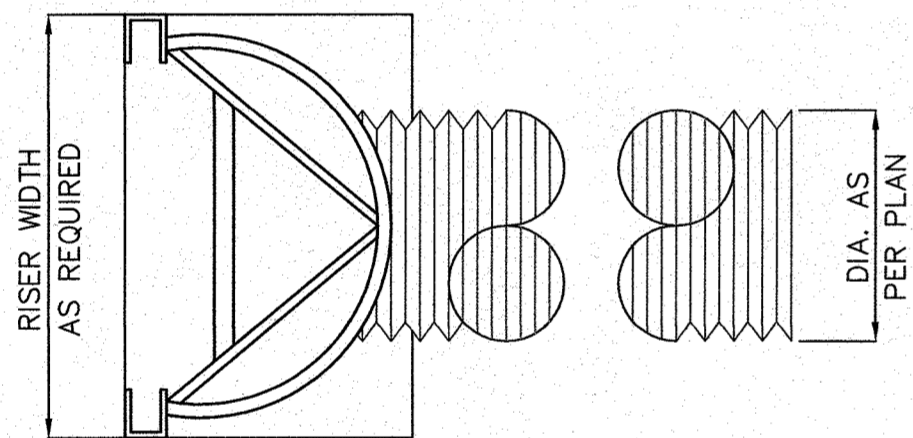
NOTE:
1. REFER TO SITE PLANS FOR LOCATIONS AND INVERTS.

FLARED END SECTION
N.T.S.

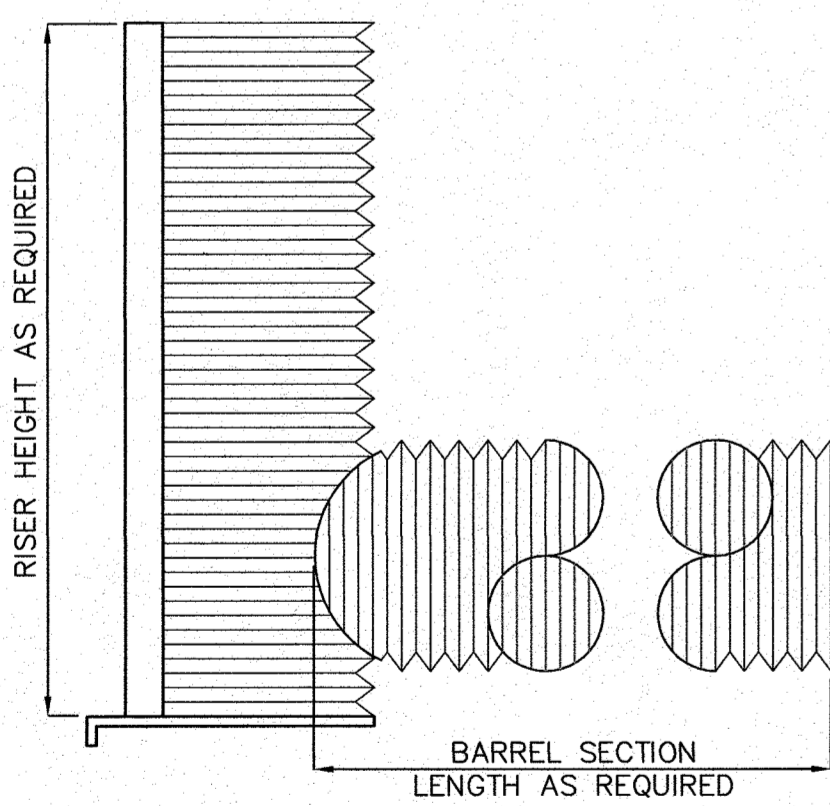


- NOTES:**
1. SILTATION FENCING SHALL BE INSTALLED DOWNSLOPE OF ALL PROPOSED AND EXISTING DISTURBED AREAS, OR AS SHOWN ON THE PLANS.
 2. EROSION CONTROL MEASURES SHALL BE MAINTAINED UNTIL VEGETATIVE OR STABILIZED COVER HAS BEEN FIRMLY ESTABLISHED.
 3. EROSION CONTROL MEASURES SHALL FOLLOW THE PERFORMANCE STANDARDS OF THE USDA SOIL CONSERVATION SERVICE, AND ANY APPLICABLE STATE/LOCAL CONSERVATION AUTHORITY.

SILTATION FENCE DETAIL
N.T.S.



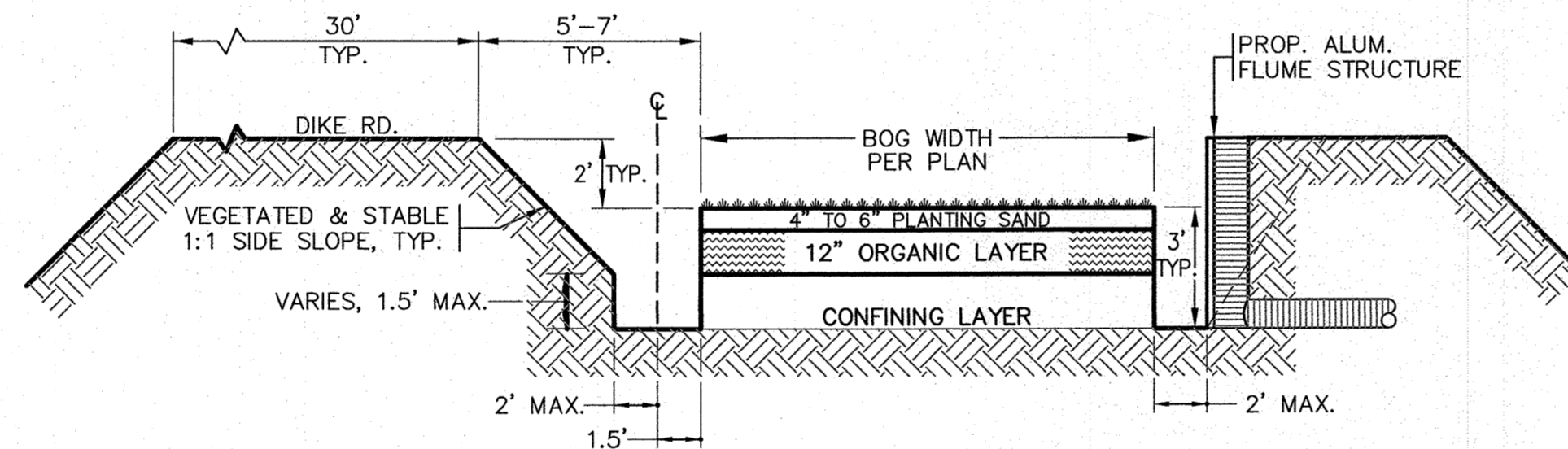
TOP VIEW
STANDARD CONSTRUCTION



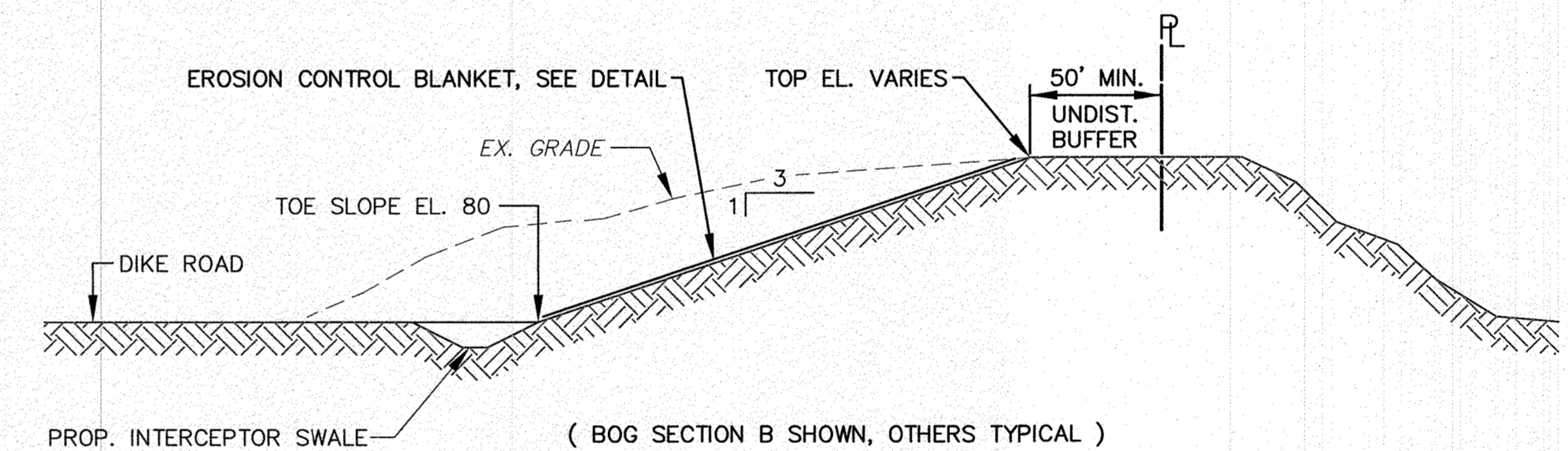
SIDE VIEW
STANDARD CONSTRUCTION

- NOTES:**
1. UNITS SHALL BE FELKER STANDARD ALUMINUM FLOW GATES OR APPROVED EQUAL.
 2. ALL BARREL SECTIONS SHALL BE FITTED WITH ANTI-SEEP COLLARS, MADE AVAILABLE, WELDED OR BOLTED.
 3. SET UNIT ON A COMPACTED GRAVEL BASE.

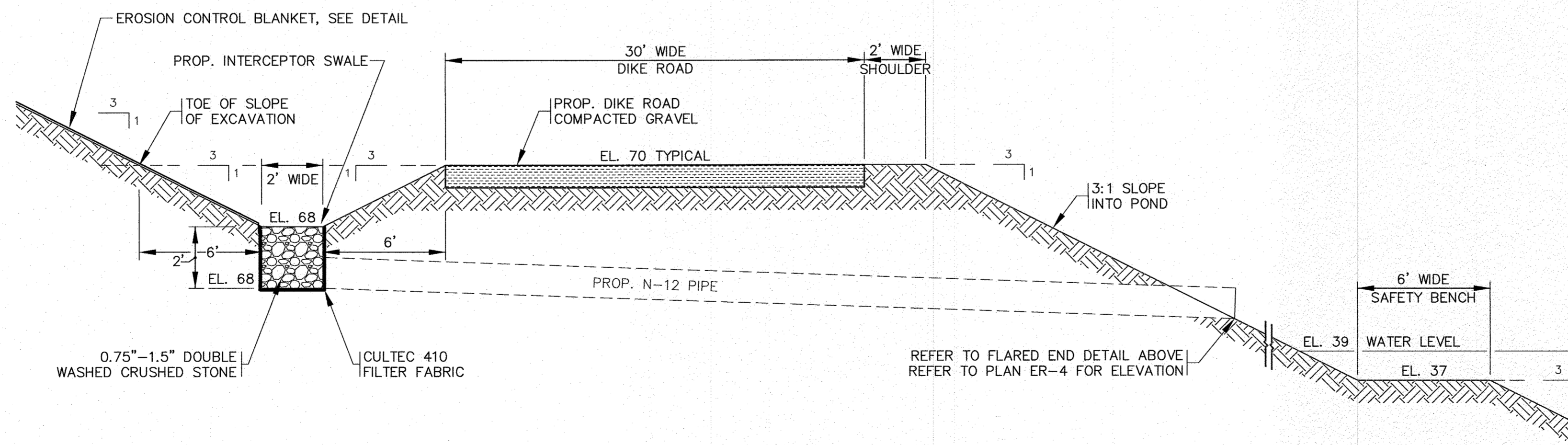
PROP. FLUME DETAIL
N.T.S.



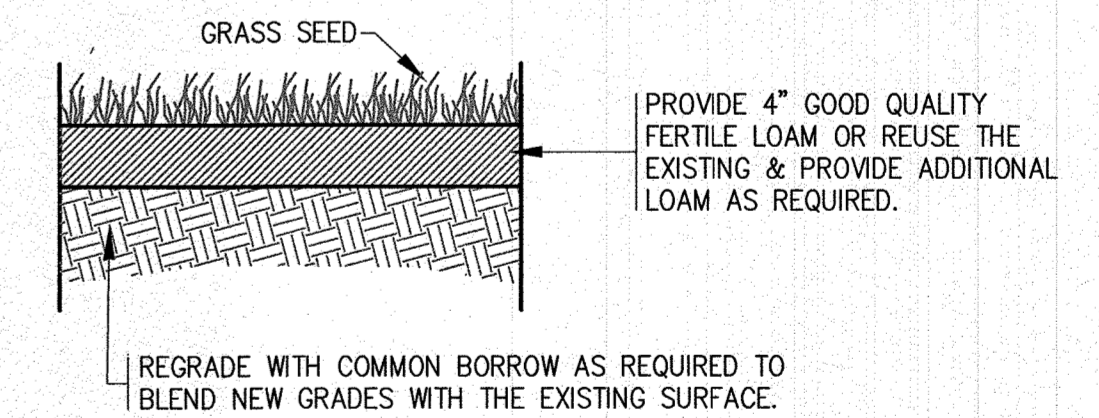
TYPICAL SECTION THROUGH CRANBERRY BOG
N.T.S.



TYPICAL SLOPE DETAIL AT PROPERTY LINE
N.T.S.



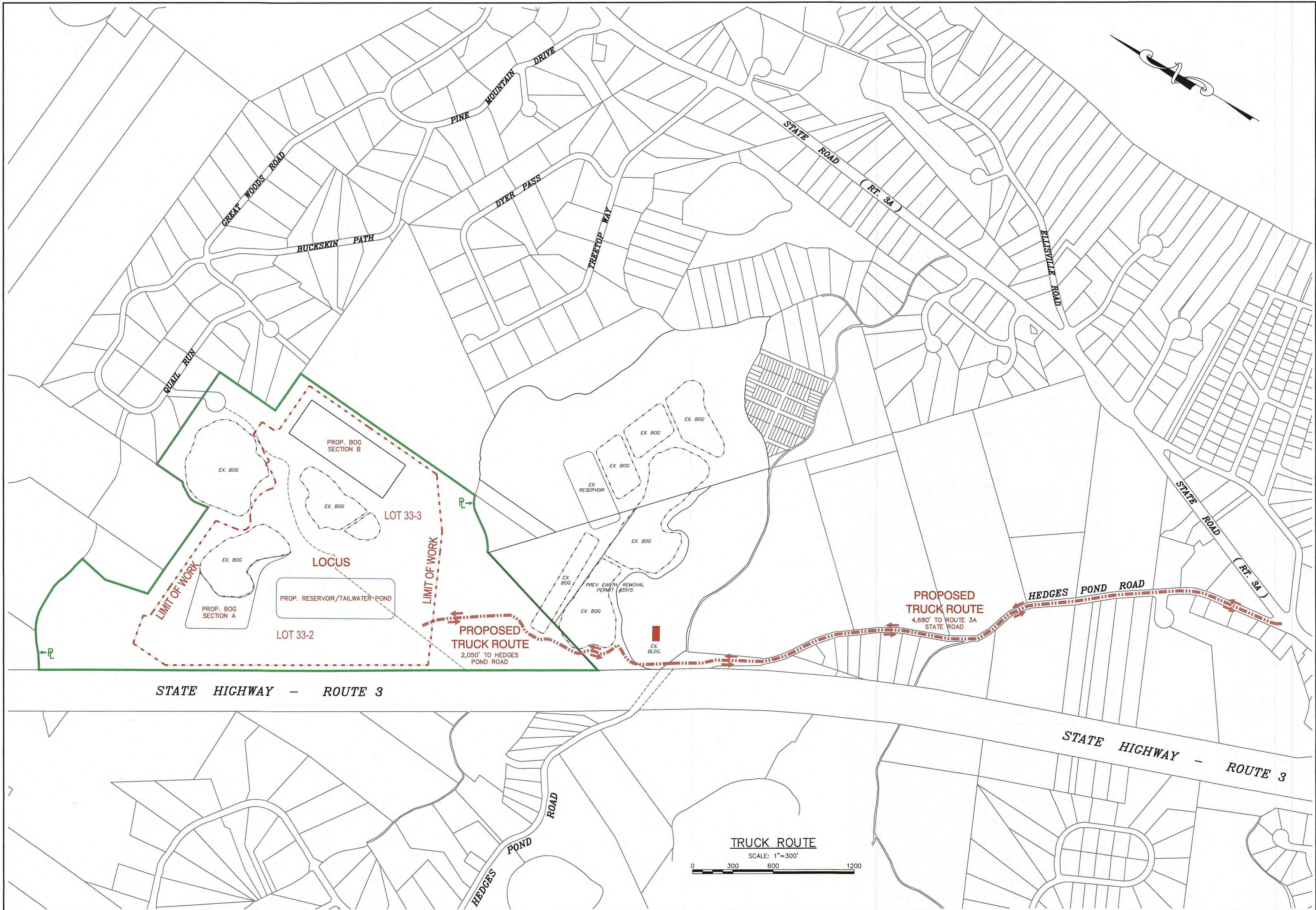
TYPICAL SECTION DIKE ROAD AT POND
N.T.S.



- NOTES:**
1. MATERIALS AND CONSTRUCTION METHODS FOR LOAM BORROW AND TOPSOIL SHALL CONFORM TO THE RELEVANT PROVISIONS OF SECTION 751 OF THE MassDOT STANDARD SPECIFICATIONS AND WITH THE PROCEDURES DESCRIBED HEREIN.
 2. MATERIALS AND CONSTRUCTION FOR SEEDING SHALL CONFORM TO THE RELEVANT PROVISIONS OF SECTION 765 OF THE MassDOT STANDARD SPECIFICATIONS.
 3. SEED FOR GRASS STRIPS SHALL CONFORM TO MassDOT MATERIAL SPEC. M6.03.0, GRASSPLOTS AND ISLANDS.
 4. LOAM AND SEED ALL DISTURBED AREAS.

LOAM & SEED DETAIL
N.T.S.

DATE: OCT. 9, 2024	APPROVED BY:	
DRAWN BY: JH	G.A.F. ENGINEERING, INC. PROFESSIONAL ENGINEERS & LAND SURVEYORS 266 MAIN STREET - WAREHAM, MA 02571 TEL: (508) 295-6600 FAX: (508) 295-6634 E-MAIL: info@gafenginc.com	
CHECKED BY: WFM	APPROVED BY: <i>[Signature]</i> G.A.F. ENGINEERING, INC.	PREPARED FOR: LANDERS FARM, LLC 351 WINTER STREET HANOVER, MA
JOB NO.: 19-9277		
SCALE: AS NOTED	PERMIT SET (NOT FOR CONSTRUCTION)	DWG. ER-7

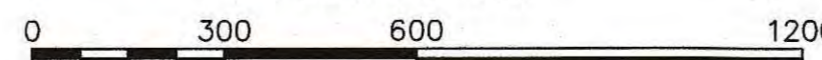


STATE HIGHWAY - ROUTE 3

STATE HIGHWAY - ROUTE 3

TRUCK ROUTE

SCALE: 1"=300'



<p>G.A.F. ENGINEERING, INC. PROFESSIONAL ENGINEERS & LAND SURVEYORS 266 MAIN STREET - WAREHAM, MA 02571 TEL: (508) 295-6600 FAX: (508) 295-6634 E-MAIL: info@gafenginc.com</p> <p><small>COPYRIGHT © 2024 G.A.F. ENGINEERING, INC. NO PART OF THIS DOCUMENT MAY BE REPRODUCED, STORED, OR TRANSMITTED IN ANY FORM OR BY ANY MEANS, WITHOUT THE EXPRESS WRITTEN CONSENT OF G.A.F. ENGINEERING, INC. WITH THE EXCEPTION OF ANY EXPRESS WRITTEN CONSENT OF G.A.F. ENGINEERING, INC. SHALL BE DEEMED TO VIOLATE THIS AGREEMENT.</small></p>	<p>DATE: OCT. 9, 2024 DRAWN BY: JH CHECKED BY: WFM JOB NO.: 19-9277 SCALE: 1" = 300'</p>
	<p>APPROVED BY: <i>[Signature]</i></p> <p>PROF. REG. NO. 10088 CIVIL WAREHAM, MA</p>
<p>EARTH REMOVAL PLAN TRUCK ROUTE PLAN</p> <p>HEDGES POND ROAD PLYMOUTH, MA</p> <p>PREPARED FOR: LANDERS FARM, LLC 351 WINTER STREET HANOVER, MA</p>	<p>REV. DATE BY APP'D DESCRIPTION</p>
<p>JOB NO.: 19-9277 DWG. FR-8</p>	