



## STOP SAND MINING IN CARVER

### NO NEW PERMIT FOR MORE MINING IN TREMONT ST./MAYFLOWER RD. NEIGHBORHOOD

ATTEND THE PUBLIC HEARING: TUES. NOV. 5, 2024, 3:00 PM

108 MAIN STREET, TOWN HALL

CALL, WRITE CARVER ERC!

### **FRUIT D'OR CRANBERRY & ERC MISLEAD PUBLIC WITH MAYFLOWER RD. MINING PLAN**

- Canadian-based Fruit d'Or cranberry company seeks massive sand and gravel mining permit
- 10 acres more of forest destroyed for "cranberry pond"
- Permit violates Earth Removal Bylaw Section 9.1.1: not "necessary and incidental" to build agricultural projects, but a ruse to evade the law!

### **SAND MINING EMITS CARCINOGENIC SILICA DUST**

- DEMAND SAND TESTING AND AIR MONITORING. Mining exposes residents to silica sand dust, increases risk of severe health effects and death. More information:  
<https://www.msha.gov/regulations/rulemaking/silica>

### **EXCESSIVE, DANGEROUS TRUCK TRAFFIC**

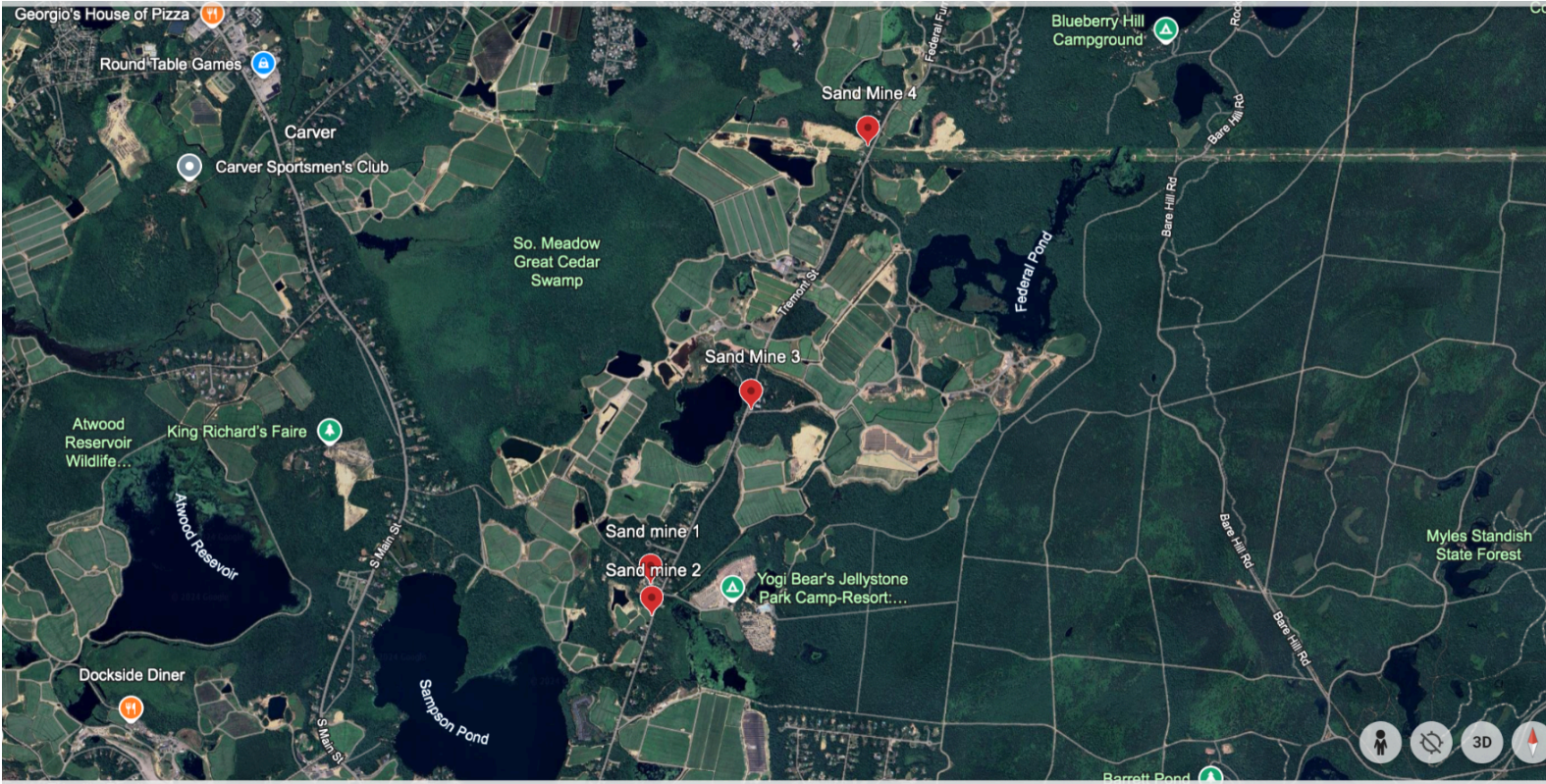
- New project: 27,000 truckloads, 54,000 MORE truck trips in Carver
- Two other massive Tremont Street mining operations nearby: EJ Pontiff mining at Federal Furnace Cranberry is 125,000 truck trips, Great Cedar Cranberry/Edgewood 54,000 truck trips

### **ERC BIASED, DOES NOT PROTECT RESIDENTS OR ENVIRONMENT**

- Majority of ERC have conflicts of interest in the cranberry and trucking business

### **DESTROYS FOREST, WETLANDS, WILDLIFE HABITAT**

- More mining in [Plymouth-Carver Sole Source Aquifer](#), permanently removing sand and gravel filtration for water; Great Cedar Cranberry already mining in the aquifer, Federal Furnace Cranberry mined the aquifer
- Rare Species, Core Habitat and Critical Natural Landscape at risk



**Above: Cluster of active and proposed sand mines on Tremont Street, Carver; Mine 1: Fruit D'Or at Mayflower Rd, Mine 2: Mayflower Road/0 Tremont, Mine 3: EJ Pontiff Cranberry at 104 Tremont Site, Mine 4: Edgewood Bogs/Great Cedar Cranberry/Cape Cod Select at 73 Tremont St.**

**Below: Outlined in red**

### New Sand Mine at 0 Mayflower Road



- BioMap Elements: Critical Natural Landscape
- BioMap Elements: Core Habitat
- NHESP Priority Habitats of Rare Species
- Property Tax Parcels

1:9 028  
100 ft  
500 ft

MassMapper  
Leaflet | MassGIS 2023 Aerial Imagery



